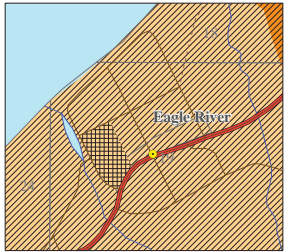
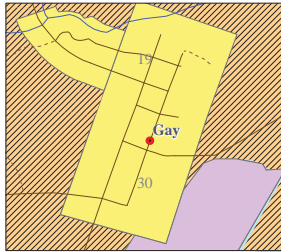


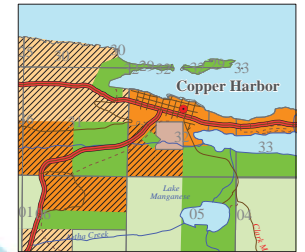
Keweenaw County Future Land Use Map



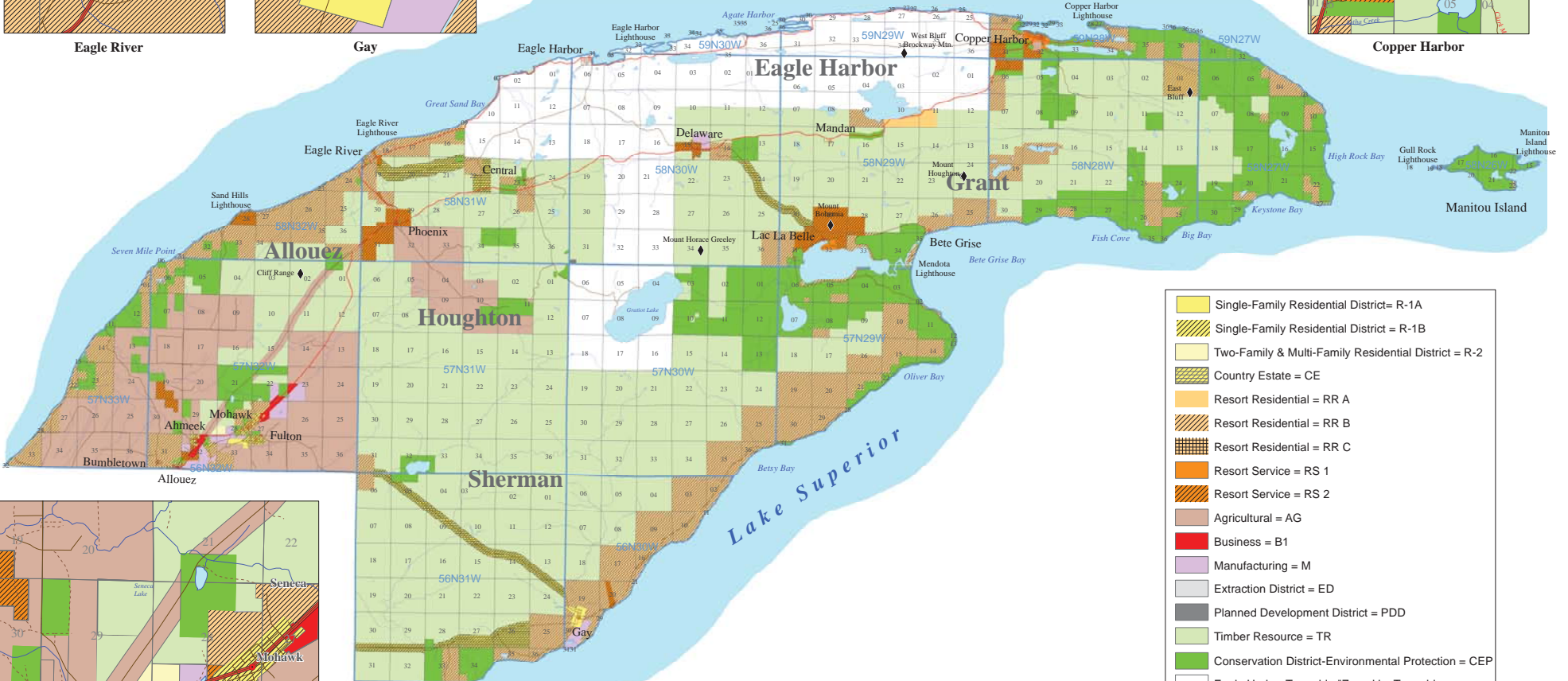
Eagle River



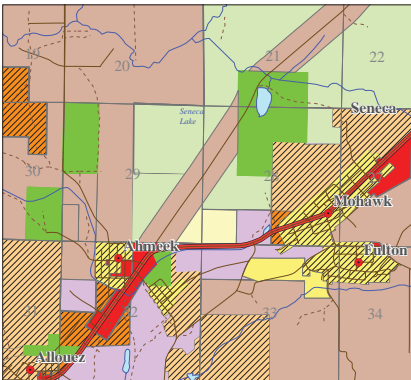
Gay



Copper Harbor



- Single-Family Residential District = R-1A
- Single-Family Residential District = R-1B
- Two-Family & Multi-Family Residential District = R-2
- Country Estate = CE
- Resort Residential = RR A
- Resort Residential = RR B
- Resort Residential = RR C
- Resort Service = RS 1
- Resort Service = RS 2
- Agricultural = AG
- Business = B1
- Manufacturing = M
- Extraction District = ED
- Planned Development District = PDD
- Timber Resource = TR
- Conservation District-Environmental Protection = CEP
- Eagle Harbor Township "Zoned by Township-Contact Township Zoning Administration"



Allouez, Ahmeek, Mohawk, & Fulton



Special Note:
Keweenaw County Zoning Ordinance page 4-4, 4.3.6 CEP.
Lands include those that are currently or are soon to be held in conservancy ownership, public lands (or soon to be) that have been identified for preservation and compatible recreation, undevelopable coastline where preservation is in the best public interest, and those lands where owner intention has indicated future conservation efforts.
The majority of the land to be rezoned to CEP is currently in TR and RR.

Data Source:
MIRIS/MI Geographic Framework Base Data
Keweenaw Zoning Ordinance Revisions as of January 31, 2017.