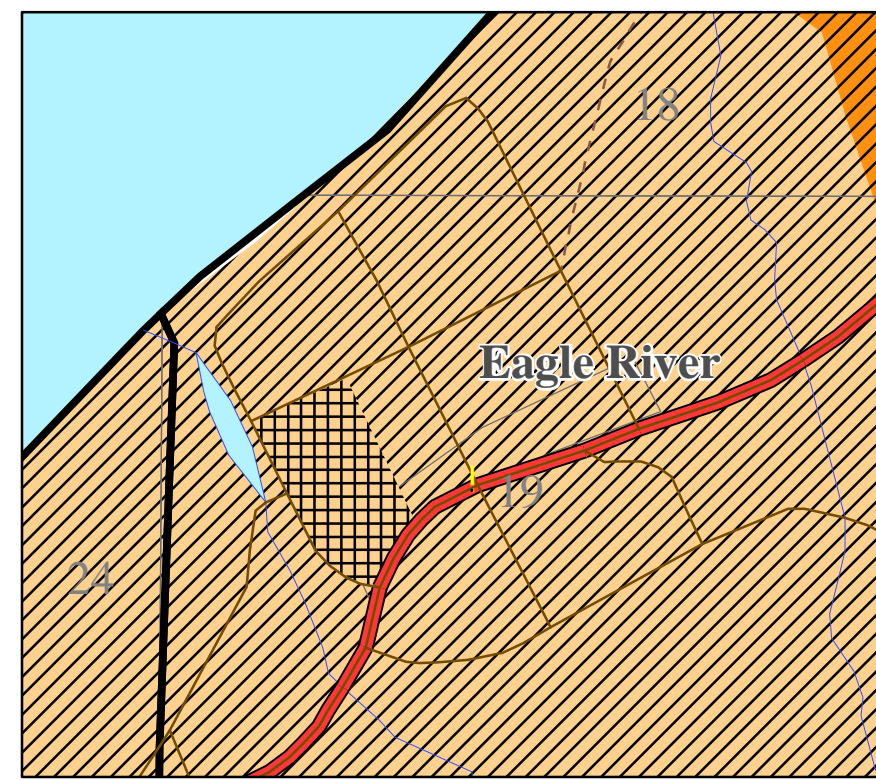
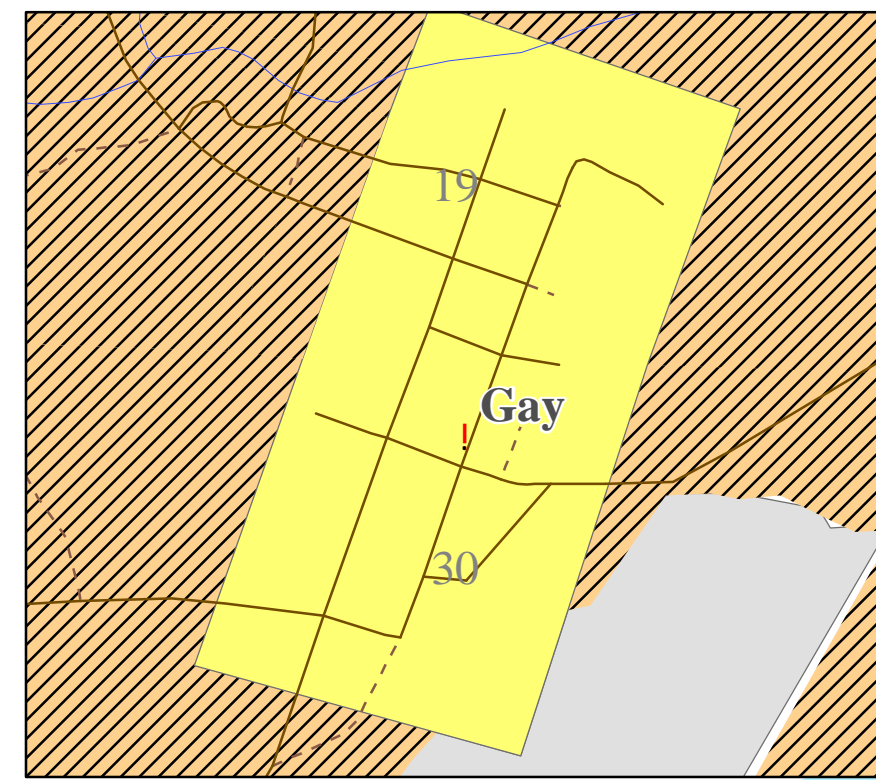


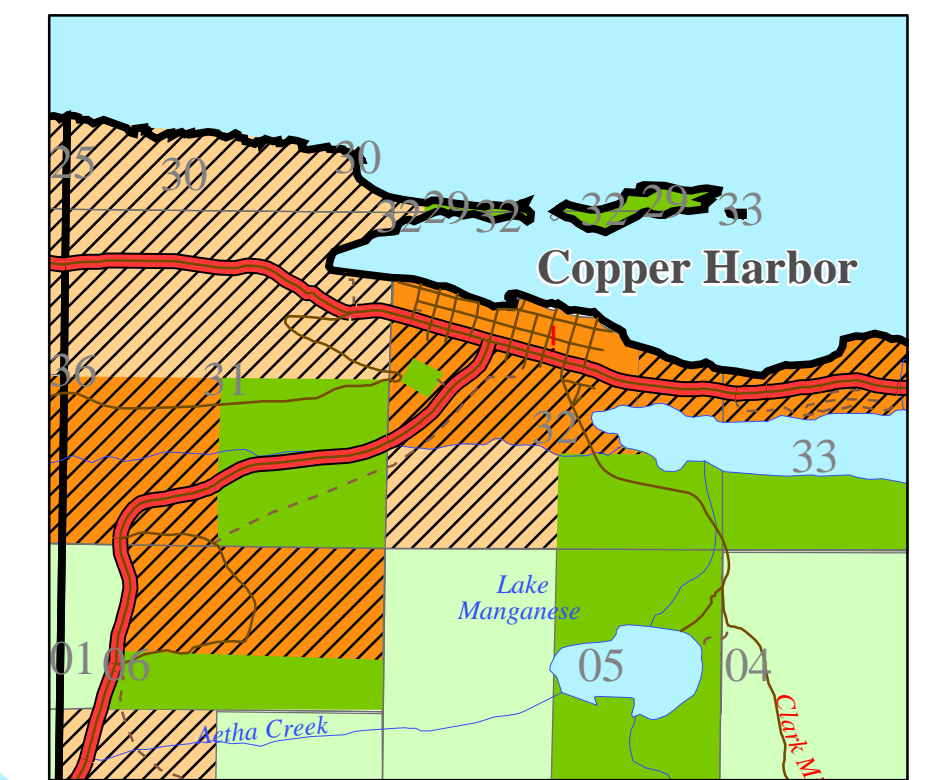
Keweenaw County Zoning Map



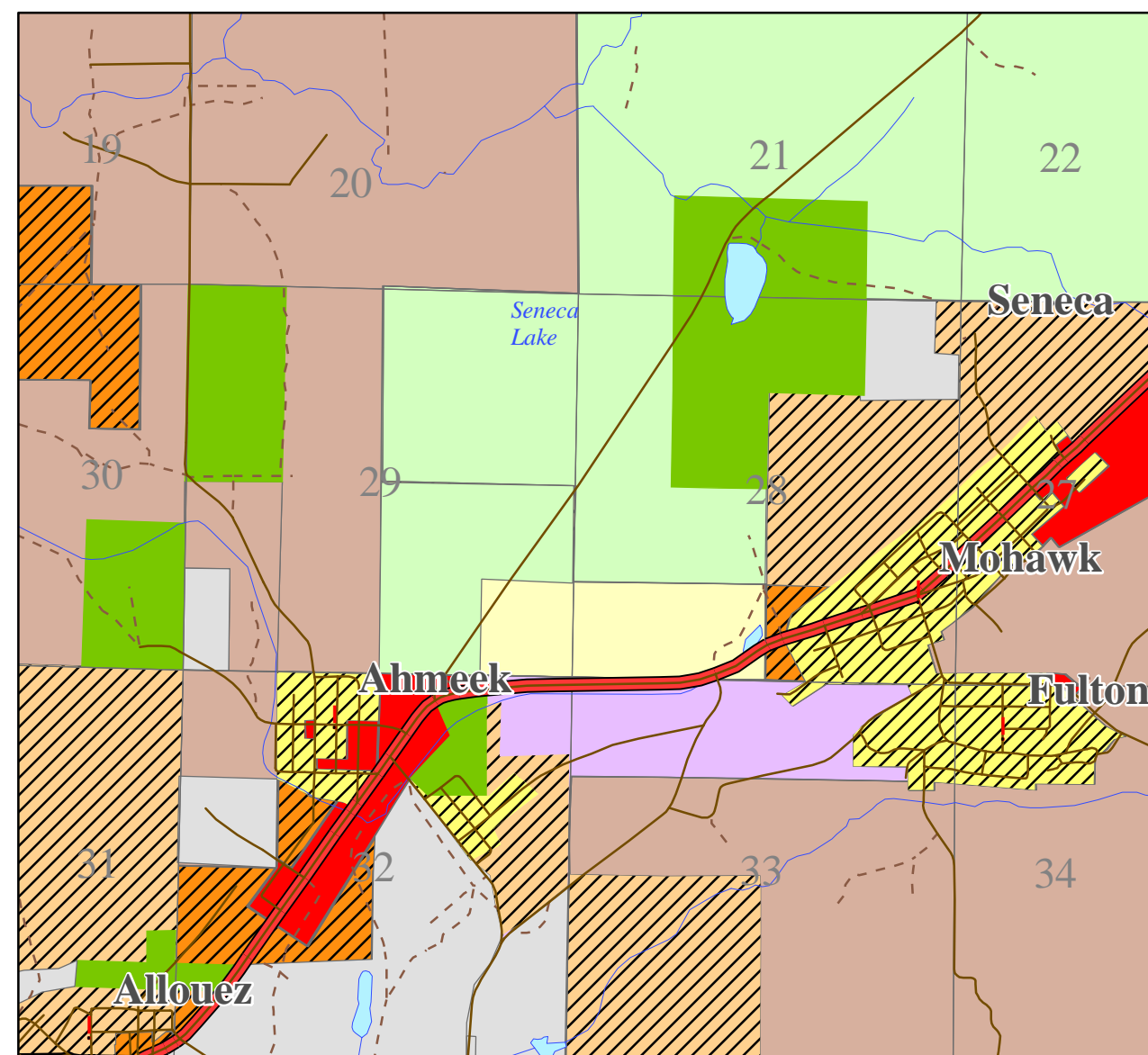
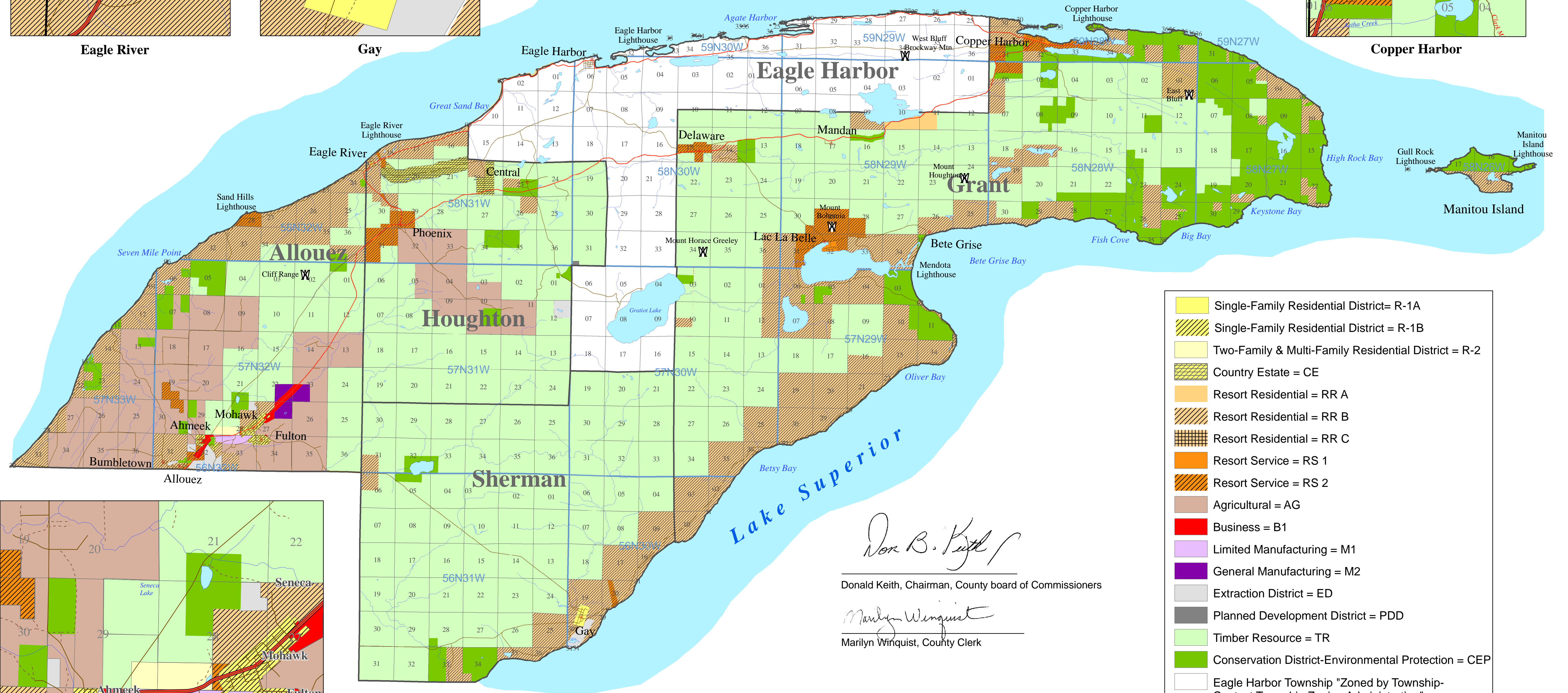
Eagle River



Gay



Copper Harbor

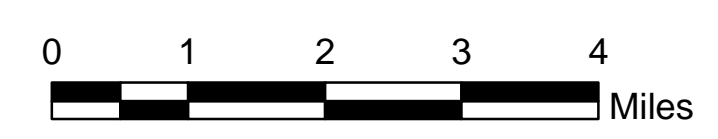


Allouez, Ahmeek, Mohawk, & Fulton

- Single-Family Residential District= R-1A
- Single-Family Residential District = R-1B
- Two-Family & Multi-Family Residential District = R-2
- Country Estate = CE
- Resort Residential = RR A
- Resort Residential = RR B
- Resort Residential = RR C
- Resort Service = RS 1
- Resort Service = RS 2
- Agricultural = AG
- Business = B1
- Limited Manufacturing = M1
- General Manufacturing = M2
- Extraction District = ED
- Planned Development District = PDD
- Timber Resource = TR
- Conservation District-Environmental Protection = CEP
- Eagle Harbor Township "Zoned by Township-Contact Township Zoning Administration"

Don B. Keith
 Donald Keith, Chairman, County board of Commissioners

Marilyn Winquist
 Marilyn Winquist, County Clerk



This is to certify that this is the Official Zoning Map Referred to in Article 4, Section 3.2.2, of the Zoning Ordinance of Keweenaw County, Michigan"

Adopted February 14, 2007, Amended March 19, 2008

Data Source:
 MIRIS/MI Geographic Framework Base Data
 Keweenaw Zoning Ordinance Revisions as of October 3, 2007.